

CERTIFICATE OF LOCATION OF GOVERNMENT CORNER

NORTH 1/4 Corner of Section 18, Township 106N, Range 43W, 5TH P.M.

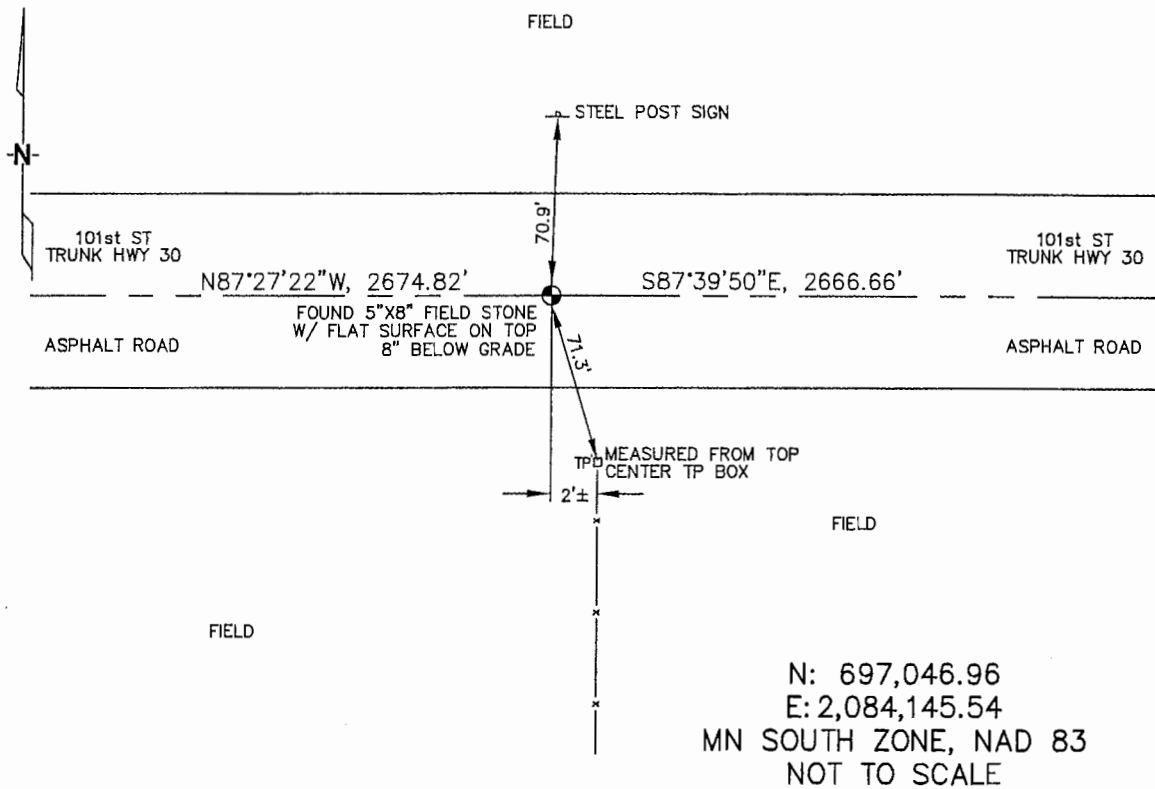
STATE OF MINNESOTA, County of MURRAY

At the corner location shown on the sketch :

On 3/23/2006 found A FIELD STONE, 5"x8". FLAT TOPPED, 8" DEEP
IN C/L OF ASPHALT PAVEMENT
 left monument as found, lowered monument, removed monument (explain)

On _____ set _____

Sketch of reference ties



Statement of evidence relative to this corner location is on back page

I hereby certify that this document and the data contained herein was prepared by me or under my direct supervision.

Thomas V. Zell 5/22/06
 Thomas V. Zell Date

Registration No. 44563

- Land Surveyor, Professional Engineer
 County Surveyor, County Engineer

OFFICE OF THE COUNTY RECORDER

County of _____

SEP 28 2006

I hereby certify that this document was filed in the Co. Recorders office at _____ M. on the day of _____ A.D., 20

County Recorder James V. Johnson
 By _____, Deputy

DOCUMENT NO. _____

STATEMENT OF EVIDENCE:

NORTH 1/4 CORNER, SECTION 18, T. 106 N., R. 43 W.,
MURRAY COUNTY, MINNESOTA

- .1866 J.W. Bishop, US. Deputy Surveyor, monumented corner.
- 10/20/1901 Murray Co. placed stone, 10"X14"X20", on corner, at grade; no ties.
- ? Date MN DOT R/W Map for Trunk Highway 30, calls for 1/4 corner being at intersection of road (east & west) and fence (north), 4.8' north from C/L of Trunk Highway 30 at POT Sta 667+09.3.
- 3/23/2006 Ulteig Engineers, Inc., Survey Crew, Dennis Lavallie Party Chief, found a 5"X8" field stone with a flat top, no markings, 8" deep, on C/L of asphalt pavement; 2'± west from fence line running south.
Ties: N-70.9' to steel sign post;
S-71.3' to top, center, telephone pedestal;
E-2666.66' to NE corner, Section 18;
W-2674.82' to NW corner, Section 18.